



PisaTM

1-800-UNILOCK | UNILOCK.COM

UNILOCK
PAVERS & WALLS

PISA™

CLASSIC



GRANITE



MAHOGANY



NATURAL



SIERRA

PRODUCT ATTRIBUTES

Visual Appearance	The built-in setback design of Pisa™ automatically forms the correct slope, ensuring a highly stable retaining wall. Utilizing the product's tapered components, you can form curved walls and steps. Classic tongue and groove for easy install.
Finish	Split / Rock-faced.

PRODUCT SPECIFICATIONS



STANDARD
12 x 8 x 6"
300 x 200 x 150mm



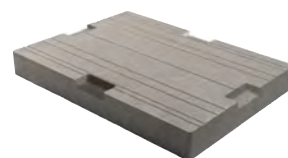
TAPERED
12 x 8 x 6"
300 x 200 x 150mm



CORNER
12 x 8 x 6"
300 x 200 x 150mm



24" COPING
12 x 24 x 3"
300 x 600 x 75mm
*See Steps, Treads & Coping
section page 153 for more details*

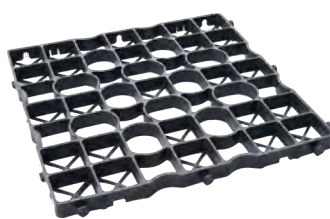


U-GRIP™ BASE PAD
14 x 19 x 2"
355 x 482 x 55mm

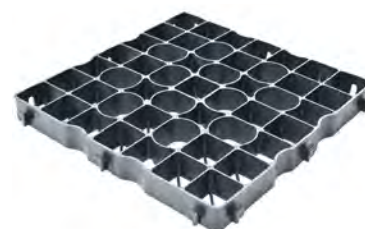


- Creates a revolutionary Reinforced Soil Structure (RSS) with high tensile and compressive strength to maximize the performance of pavement structures.
- Extremely permeable, long lasting, durable and environmentally friendly. Lightweight and easy to handle.
- Simple and quick installation.
- Allows for easy repairs / adjustments after installation.

*Colour selection should be chosen from actual samples.



DRIVECEL30 LIGHT DUTY
20 x 20 x 1.2"
500 x 500 x 30mm



DRIVECEL50 HEAVY DUTY
20 x 20 x 2"
500 x 500 x 50mm

TECHNICAL INFORMATION

ASTM C 1372 Standard Specifications for Dry-Cast Segmental Retaining Wall Units

Conforms to:

- C140 for Absorption and Compressive Strength > 3000 PSI
- C1262 for Freeze Thaw Durability <1% mass loss
- C1372 Overall dimensional variations permissible for width, height and length +/-3 mm

Unilock standards exceed 5,000 PSI for Pisa2® products with:

- 4% absorption avg.
- 5% absorption max.
- Dimensional Accuracy +/-3 mm

Test results available upon request

Meets the U.S. Architectural & Transportation Barrier Compliance Board Slip-Resistance Surfaces Advisory Guidelines

PRODUCT DATA

	Face Feet Per		Linear Feet Per		Units Per		Per Bundle		Lbs Per	
Stones & Bundling	Bundle	Unit	Bundle	Unit	Bundle	Face Feet	Layers	Sections	Unit	Bundle
Gormley Manufacturing; U-Grip - Gormley Manufacturing										
Standard - Pre Split - Single Piece	24.00	0.33	47.90	0.67	72	3.00	-	4	48	3,456
Tapered - Double Unit	20.00	0.67	40.00	1.33	30	1.50	-	2	93	2,775
Corner Unit - Double Unit	20.00	1.67	-	-	12	0.60	-	2	96	1,152
24" Coping Unit	16.00	1.00	64.00	4.00	16	1.00	9	-	145	2,320
U-Grip Base Pad	-	-	85.39	1.58	54	-	9	-	46	2,500

Notes: Sold in full bundles or sections only. Maximum height - 36" (under optimum conditions) but can be engineered for walls that are required to be higher. Higher walls can be achieved using geogrid reinforcement. Tapered units will allow for a minimum 5ft. outside radius. Automatic setback is ¾" per row. Engineering services are available. For more information, samples or custom options, please contact your Unilock Territory Manager or call 1-800-UNILOCK.

APPLICATIONS



Garden Walls & Seat Walls

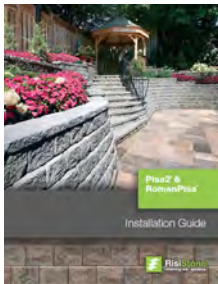


Retaining Walls



Steps

For coping options, we recommend using Natural Stone, Universal Coping or Pisa2™ Coping.



Refer to the Pisa2 Installation Guide for more information.

<https://www.risistone.com/installation-guides/>

RECOMMENDED ADHESIVE



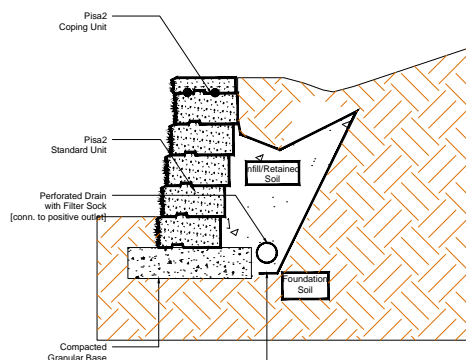
Gator Block Bond XP

- ✓ VOC Compliant
- ✓ Low odour- safe indoors or out
- ✓ Fast curing- provides permanent overnight bond
- ✓ Suitable for use in hot and cold environments
- ✓ Non-shrinking- does not crack
- ✓ Strong and versatile

Coverage: For 1/4" Bead (approx)

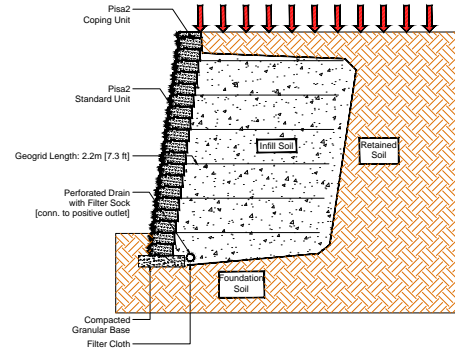
10 oz		28 oz	
m	ft.	m	ft.
-9	-31	-26	-86

GRAVITY WALL SECTION



Cross sections are examples, and must not be used for construction.

GEOGRID WALL SECTION



Cross sections are examples, and must not be used for construction.

LEED INFORMATION

Materials & Resources: LEED V4:

Building Product Disclosure and Optimization

Sourcing of Raw Materials - Sourcing of Raw Materials and Extraction • 1 point

Sourcing of Raw Materials - Leadership Extraction Practices • 1 point

Material Ingredient Reporting - Material Ingredient Reporting • 1 point

Material Ingredient Reporting - Material Ingredient Optimization • 1 point

Environmental Product Declaration • 1 point

If required, summary test data shall be provided with the SRW Design and shall include:

a) SRW Unit shear strength as per ASTM D6916

b) SRW Unit - Geosynthetic Reinforcement connection strength as per ASTM D6638

PISA™ COPING



GRANITE



MAHOGANY



NATURAL



SIERRA

PRODUCT ATTRIBUTES

Visual Appearance	Split / Rock Faced to complement the Pisa™ Wall.
Finish	Split / Rock Faced.

PRODUCT SPECIFICATIONS



24" COPING

12 x 24 x 3"
300 x 610 x 75mm

RECOMMENDED ADHESIVE & MORTAR



Gator Block Bond XP

- | VOC Compliant
- | Low odour- safe indoors or out
- | Fast curing- provides permanent overnight bond
- | Suitable for use in hot and cold environments
- | Non-shrinking- does not crack
- | Strong and versatile

Coverage: For 1/4" Bead (approx)

10 oz		28 oz	
m	ft.	m	ft.
-9	-31	-26	-86



Ardex X32 Microtec

- | Fast setting - 3 hours
- | Water repellent - for fast track swimming pool and wet area applications
- | Ideal for heavy and large format tiles
- | Easy to mix and apply - just add water
- | Ideal for pool surroundings, patios, walkways, roof decks and more
- | For joints up to 1 1/4" (32mm)
- | Ideal for Natural Stone, Porcelain, Granite
- | Two colours: Grey, White

Coverage: 1/4" x 1/4" Sq. Notch trowel; 80 sq. ft. (7.4 sq. m)

PRODUCT DATA

Stones & Bundling	Face Feet Per		Linear Feet Per		Units Per		Per Bundle		Lbs Per	
	Bundle	Unit	Bundle	Unit	Bundle	Face Feet	Layers	Sections	Unit	Bundle
Gormley Manufacturing; U-Grip - Gormley Manufacturing										
Coping 24" - Double Unit (does not include closed end units)	16.00	1.00	64.00	4.00	16	1.00	-	2	145	2,320

Notes: Sold in full bundles or sections only. All measurements are nominal. For more information, samples or custom options, please contact your Unilock Territory Manager or call 1-800-UNILOCK.

*Colour selection should be chosen from actual samples.